

purchase order

Curvy | EddyK

2026 COLLECTION

CUSTOMER: _____

CONTACT NAME: _____

ADDRESS: _____

TEL: _____

EMAIL: _____

SALES REP: _____

ALL PRICES ARE IN EURO

Annabelle

16W

18W

20W

22W

24W

26W

28W

30W

32W

UR621



Ivory

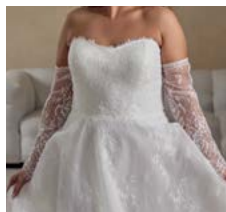
€675.00

ivory chantilly lace ballgown with eyelash trim along soft scoop neckline, buttons to end of train

[CURVY SIZE CHART](#)

Annabelle-SL S M L

UR621SL



Ivory

€89.00

chantilly lace long sleeves

[CURVY SIZE CHART](#)

Sunny

16W

18W

20W

22W

24W

26W

28W

30W

32W

UR622



Ivory

€795.00

fit-n-flare crepe gown with off the shoulder connected swag straps, ivory lace and sequins, buttons to end of illusion train

[CURVY SIZE CHART](#)

Paige

16W

18W

20W

22W

24W

26W

28W

30W

32W

UR623B



Ivory

€735.00

mermaid brocade gown with draped cat-eye strapless neckline, buttons to end of train

[CURVY SIZE CHART](#)

Paige

UR623M



16W 18W 20W 22W 24W 26W 28W 30W 32W

Ivory

€585.00

mermaid mikado gown with draped cat-eye strapless neckline, buttons to end of train

[CURVY SIZE CHART](#)

Bonnie

UR624



16W 18W 20W 22W 24W 26W 28W 30W 32W

Ivory/Skin

€595.00

a-line chiffon gown with ruched bodice, skin cleavage, slit, buttons to end of train

[CURVY SIZE CHART](#)

Bonnie-SL

UR624SL



S M L

Ivory

€79.00

chiffon bell sleeves

[CURVY SIZE CHART](#)

Lilah

UR625



16W 18W 20W 22W 24W 26W 28W 30W 32W

Ivory/Champagne/Dust/Skin

Ivory/Ivory/Skin

€695.00

ballgown with beaded ivory lace and sequins over ivory tulle, champagne tulle, dust matte lining, skin cleavage, buttons to end of train

[CURVY SIZE CHART](#)

Dotty

UR626



16W 18W 20W 22W 24W 26W 28W 30W 32W

Ivory

€685.00

ivory mikado a-line gown, ivory corset back, slit, pockets, buttons to end of train

[CURVY SIZE CHART](#)

Emery

UR627



16W 18W 20W 22W 24W 26W 28W 30W 32W

Ivory

€555.00

ivory chiffon a-line with ivory lace over ivory tulle, illusion straps and ivory illusion closed back, buttons to end of train

[CURVY SIZE CHART](#)

Melody

UR628



- Ivory/Champagne/Dust/Skin
 Ivory/Ivory/Skin

€695.00

ballgown with off the shoulder connected swag straps, beaded ivory lace and sequins over ivory tulle, champagne tulle, dust matte lining, skin cleavage, slit, buttons to end of train

CURVY SIZE CHART

Jane

UR629



- Ivory

€795.00

fit-n-flare crepe gown with beaded ivory lace, sequins and pearls, buttons to end of illusion train

Brielle

UR630



- Ivory/Skin

€735.00

fit-n-flare gown in ivory lace with sequins over ivory tulle, organza, ivory stretchy lining, buttons to end of train

CURVY SIZE CHART

Elaine

UR631



- Ivory/Skin

€595.00

mikado ballgown with basque waist, skin cleavage, pockets, buttons to end of train

CURVY SIZE CHART

Shay

UR632



- Ivory

€785.00

fit-n-flare gown with beaded ivory lace and sequins over ivory tulle, chantilly lace, ivory stretchy lining, beaded spaghetti straps, buttons to end of train

CURVY SIZE CHART

Tinsley

UR633



- Ivory

€655.00

crepe a-line gown with corset bodice and basque waist, slit, buttons to end of train

Tinsley-SL S M L

UR633SL

 Ivory

€79.00

crepe-chiffon off shoulder bishop sleeves

CURVY SIZE CHART

Goldie

UR634

 Ivory

€775.00

fit n flare gown with strapless sweetheart neckline in all over beaded embroidered tulle with sequins

CURVY SIZE CHART

Goldie-DT

UR634DT

 Ivory

€575.00

removable mikado overdress with buttons to end of train

CURVY SIZE CHART

Halsey

UR635

 Ivory

€775.00

ballgown with satin corset bodice with basque waist, pearl and crystal peek-a-boo beading, ivory tulle skirt, ivory matte lining, buttons to end of train

CURVY SIZE CHART

Waverly

UR636

 Ivory/Sand

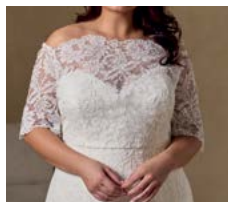
€895.00

mermaid gown with ivory corded lace over ivory tulle, sand stretchy lining, buttons to end of train

CURVY SIZE CHART

Waverly-JK 16W 18W 20W 22W 24W 26W 28W 30W 32W

UR636JK

 Ivory

€149.00

corded lace off shoulder 3/4 length sleeve jacket

CURVY SIZE CHART

top reordering carryover styles

Elsie

UR527



16W **18W** **20W** **22W** **24W** **26W** **28W** **30W** **32W**

Ivory

€585.00

A-Line gown in ivory Crepe with ruffled bodice, pockets, buttons to end of train.

[CURVY SIZE CHART](#)

Liz

UR471



16W **18W** **20W** **22W** **24W** **26W** **28W** **30W** **32W**

Ivory/Skin

€755.00

Satin ballgown with beaded ivory lace and sequins, skin illusion back, buttons to end of train, pockets.

[CURVY SIZE CHART](#)

Bria

UR535



16W **18W** **20W** **22W** **24W** **26W** **28W** **30W** **32W**

Ivory/Champagne/Dust/Sand/Skin
 Ivory/Ivory/Skin

€675.00

A-Line gown with beaded lace and sequins over ivory tulle, champagne tulle, dust matte lining, buttons to end of train.

[CURVY SIZE CHART](#)

Yvonne

UR467



16W **18W** **20W** **22W** **24W** **26W** **28W** **30W** **32W**

Ivory/Skin

€795.00

Crepe fit-n-flare gown with ivory lace, sequins and 3D appliqués, skin illusion back and cap sleeves, buttons to end of illusion train.

[CURVY SIZE CHART](#)

Avril

UR526



16W **18W** **20W** **22W** **24W** **26W** **28W** **30W** **32W**

Ivory/Champagne/Skin

€695.00

Fit-n-Flare gown with beaded ivory lace and sequins over ivory tulle, champagne-skin unlined back.

[CURVY SIZE CHART](#)

Angel

UR522

16W

18W

20W

22W

24W

26W

28W

30W

32W



- Ivory/Champagne/Dust/Skin
- Ivory/Ivory/Skin

€675.00

A-Line gown with ivory lace and sequins over ivory tulle, champagne tulle, dust matte lining, ivory-skin long bishop sleeves, buttons to end of train.

CURVY SIZE CHART

Addison

UR473

16W

18W

20W

22W

24W

26W

28W

30W

32W



- Ivory/Skin

€945.00

Ivory Crepe A-line gown with three incorporated beaded belts, skin cleavage, buttons to end of train, pockets.

CURVY SIZE CHART

Kenzie

UR468

16W

18W

20W

22W

24W

26W

28W

30W

32W



- Ivory

€695.00

Satin ballgown with ivory lace on bodice, buttons to end of train, pockets.

CURVY SIZE CHART

DESCRIPTION REFERS TO SAMPLE COLOR

TOTAL UNITS: _____

TOTAL AMOUNT: _____

OBSERVATIONS/INSTRUCTIONS:

DATE: _____

SIGNATURE: _____

SUBJECT TO FINAL APPROVAL.

In order to expedite your sample dresses, Eddy K reserves the right to substitute one size, up or down.

A DIVISION OF EDDY K

Via Raffaello Sanzio 1,
Segrate (MI), Italy 20054

+39 02-2133574
eddyk@eddyk.com