

purchase order

SKY | EddyK

2025 COLLECTION

CUSTOMER: _____

CONTACT NAME: _____

ADDRESS: _____

TEL: _____

EMAIL: _____

SALES REP: _____

ALL PRICES ARE IN CAD

Keira

0 02 04 06 08 10 12 14 16 18 20 22 24 26 28

SKY601



Ivory/Champagne

\$1,195.00

Ballgown with pearl beaded embroidery and sequins over ivory tulle, shimmer tulle, ivory matte lining, ivory/champagne unlined bodice, buttons to end of train.

SIZE CHART B

Kai

0 02 04 06 08 10 12 14 16 18 20 22 24 26 28

SKY602



Ivory/Champagne/Skin

\$1,195.00

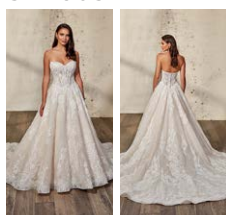
Fit-n-Flare gown with ivory lace and sequins, Chantilly and corded lace, champagne-skin unlined bodice, skin unlined back, Crepe skirt with lace cut-out panels, buttons to end of illusion train.

SIZE CHART B

Evie

0 02 04 06 08 10 12 14 16 18 20 22 24 26 28

SKY603



Ivory/Champagne/Dust/Skin

\$1,295.00

Ballgown with ivory lace and sequins over Chantilly lace, champagne tulle, dust matte lining, champagne/skin unlined corset bodice, buttons to end of train.

SIZE CHART B

Nyla

0 02 04 06 08 10 12 14 16 18 20 22 24 26 28

SKY604



Ivory

\$995.00

Mermaid gown with pearl beaded ivory embroidery over Mikado, tulle skirt, ivory matte lining, pearl buttons over zipper to skirt break.

SIZE CHART B

Shiloh

SKY605


 0 02 04 06 08 10 12 14 16 18 20 22 24 26 28

 Ivory/Sand
\$1,095.00

Fit-n-Flare gown with beaded embroidered ivory tulle and sequins, sand stretchy lining, unlined bodice, buttons to end of train.

SIZE CHART B

Promise

SKY606


 0 02 04 06 08 10 12 14 16 18 20 22 24 26 28

 Ivory/Skin
\$995.00

Fit-n-Flare Crepe gown with lace, sequins and 3D appliqués, shimmer tulle skin back, buttons to end of illusion shimmer tulle train, detachable swag sleeves.

SIZE CHART B

Promise-VE o/s

SKY606VE


 Ivory
\$235.00

Ivory lace with sequins over ivory tulle cathedral veil.

SIZE CHART B

Anais

SKY607


 0 02 04 06 08 10 12 14 16 18 20 22 24 26 28

 Ivory/Champagne/Dust
\$1,395.00

Ballgown with pearl beaded ivory tulle and glitter over champagne tulle, dust matte lining, unlined corset bodice, pearl buttons to end of train.

SIZE CHART B

Anais-SL

SKY607SL


 S M L

 Ivory/Champagne
\$135.00

Pearl beaded tulle with glitter detachable sleeves

SIZE CHART B

Bexley

SKY608


 0 02 04 06 08 10 12 14 16 18 20 22 24 26 28

 Ivory
\$995.00

Crepe Fit-n-Flare gown with pearl beaded embroidery with sequins unlined cut-out sides, key-hole back, buttons to end of train.

SIZE CHART B

Sapphire

SKY609



- Ivory/Champagne/Nude/Skin
 Ivory/Ivory

\$1,195.00

Fit-n-Flare gown with beaded embroidery and sequins over champagne tulle, ivory shimmer tulle, nude stretchy lining, unlined bodice, beaded spaghetti straps, buttons to end of train, slit.

SIZE CHART B

Carter

SKY610



- Ivory/Champagne/Almond/Skin
 Ivory/Skin

\$1,195.00

Fit-n-Flare gown with pearl beaded embroidery, 3D appliqués and sequins over ivory tulle, champagne tulle, shimmer tulle, almond stretchy lining, ivory/champagne unlined bodice, skin unlined back, lace straps.

SIZE CHART B

Carter-SL

SKY610SL



- Ivory/Champagne
 Ivory/Ivory

\$135.00

Pearl beaded embroidery with sequins and 3D appliqués, tulle long sleeves.

SIZE CHART B

Halo

SKY611



- Ivory/Champagne/Mocha
 Ivory/Ivory

\$1,275.00

Beaded ivory lace with sequins over ivory tulle, 3D appliqués, pearl beading, scattered pearls on tulle skirt, champagne tulle, mocha matte lining, shimmer tulle unlined bodice, pearl buttons to end of train.

SIZE CHART B

Dubai

SKY612



- Ivory/Champagne/Mocha/Nude/Skin
 Ivory/Skin

\$1,095.00

Mermaid gown with beaded ivory embroidery, pearl beading and sequins over ivory tulle, ivory glitter pattern tulle, champagne tulle, nude stretchy lining, beaded spaghetti straps, mocha/skin unlined back, buttons to end of train.

SIZE CHART B

True

SKY613



- Ivory/Champagne/Skin
 Ivory/Ivory

\$1,295.00

Ballgown with beaded ivory lace and sequins, sequin embroidered glitter tulle, champagne tulle, champagne pleated satin trim around neckline, champagne matte lining, skin unlined bodice, buttons to end of train, lace up over zipper back.

SIZE CHART B

top reordering carryovers

Blume

SKY504



0 02 04 06 08 10 12 14 16 18 20 22 24 26 28

Ivory/Champagne/Multi/Skin

\$1,495.00

Multi color lace over ivory Mikado, ivory-champagne-skin unlined back, pockets, buttons to end of illusion train.
Matching veil | Blume-VE/SKY504VE

SIZE CHART B

Noire

SKY503



0 02 04 06 08 10 12 14 16 18 20 22 24 26 28

Black/Black
 Ivory/Skin

\$1,355.00

Black lace over black Mikado, black tulle unlined back, pockets, buttons to end of illusion train.
Matching veil | Noire-VE/SKY503VE

SIZE CHART B

Wesley

SKY439



0 02 04 06 08 10 12 14 16 18 20 22 24 26 28

Ivory/Champagne/Dust/Skin

\$1,495.00

Beaded ivory lace with sequins over ivory tulle, shimmer tulle, dust satin lining, skin-champagne unlined bodice, beaded spaghetti straps, buttons to end of train

SIZE CHART B

Savannah

SKY307



0 02 04 06 08 10 12 14 16 18 20 22 24 26 28

Ivory/Skin

\$1,250.00

Beaded embroidery with pearls and sequins, Crepe, ivory stretchy lining, Chantilly lace illusion, lined bodice.

SIZE CHART A

Karissa

SKY509



0 02 04 06 08 10 12 14 16 18 20 22 24 26 28

Ivory/Champagne/Mocha/Skin
 Ivory/Ivory/Skin

\$1,295.00

Ballgown with ivory lace over champagne tulle, shimmer details on bodice, pearl beading around neckline and back, shimmer tulle skirt, mocha matte lining, unlined bodice, spaghetti straps with floral lace.

SIZE CHART B

DESCRIPTION REFERS TO SAMPLE COLOR

TOTAL UNITS: _____ **TOTAL AMOUNT:** _____

OBSERVATIONS/INSTRUCTIONS:

DATE: _____ **SIGNATURE:** _____

SUBJECT TO FINAL APPROVAL.

In order to expedite your sample dresses, Eddy K reserves the right to substitute one size, up or down.

A DIVISION OF EDDY K
 540 RUE BEAUHARNOIS OUEST, SUITE # 203, MONTREAL, QC, CANADA H2N1L2
 TEL.: 1-877 6783235 / 514-2239345 FAX: 514-2239346
 info@eddykcollections.com

Click your sales representative & send your order form.

SENIOR OPERATIONS MANAGER:

DAVE CARPENTER | Dave@eddykbridals.com | 516.567.0033

NATIONAL SALES MANAGER | USA & CANADA:

KATIE KILBRIDE | Katie@eddykbridals.com | 910.583.6837

SALES TEAM:

SCOTT ROSS | East Coast | Scott@eddykbridals.com | 810.240.5027

TAMMY BORS | Southeast & TX | Tammy@eddykbridals.com | 561.309.4064

BETH FREEBURG | West Coast | Beth@eddykbridals.com | 612.702.3466

ROBIN MEDINA | Central States | Robin@eddykbridals.com | 303.810.1661

KAITLIN HORVATH | Canada | kaitlin@eddykbridals.com | 848.219.3622