

# purchase order

# DREAMS<sup>®</sup> | EddyK

2025 FALL RELEASE COLLECTION

CUSTOMER: \_\_\_\_\_

CONTACT NAME: \_\_\_\_\_

ADDRESS: \_\_\_\_\_

TEL: \_\_\_\_\_

\_\_\_\_\_

EMAIL: \_\_\_\_\_

\_\_\_\_\_

SALES REP: \_\_\_\_\_

ALL PRICES ARE IN USD

## Julia

0  02  04  06  08  10  12  14  16  18  20  22  24  26  28

DR2531



Ivory/Champagne/Skin

\$695.00

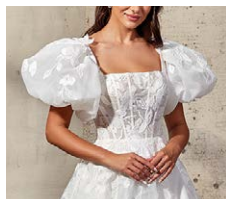
Ballgown in ivory lace over satin-organza, unlined organza and champagne tulle bodice, champagne/skin unlined back, buttons to end of train.

SIZE CHART B

## Julia-SL

S  M  L

DR2531SL



Ivory

\$89.00

Detachable sleeves with lace over satin organza.

SIZE CHART B

## Noemie

0  02  04  06  08  10  12  14  16  18  20  22  24  26  28

DR2532



Ivory/Champagne/Skin

\$795.00

Fit-n-Flare gown in ivory lace with scattered beading, Crepe skirt, unlined champagne-skin bodice, ivory tulle long sleeves, buttons to end of illusion train.

SIZE CHART B

## Kora

0  02  04  06  08  10  12  14  16  18  20  22  24  26  28

DR2533



Ivory/Skin

\$665.00

Mikado mermaid gown with pearl beaded skin illusion cut-outs in the back, buttons to end of train.

SIZE CHART B

## Ilona

0  02  04  06  08  10  12  14  16  18  20  22  24  26  28

DR2534



Ivory/Champagne/Skin

**\$785.00**

Fit-n-Flare gown with ivory lace and sequins over shimmer tulle and Chantilly lace corset bodice, Crepe skirt, champagne-skin unlined bodice, buttons to end of illusion train.

SIZE CHART B

## Ilona-VE

o/s

DR2534VE



Ivory

**\$195.00**

Cathedral veil in ivory tulle with ivory lace and sequins

SIZE CHART B

## Raina

0  02  04  06  08  10  12  14  16  18  20  22  24  26  28

DR2535



Ivory

**\$795.00**

Mikado ballgown with pearl and crystal beading on basque waist corset bodice, buttons to end of train, pockets.

SIZE CHART B

## Dora

0  02  04  06  08  10  12  14  16  18  20  22  24  26  28

DR2536



Ivory/Champagne/Skin

Ivory/Ivory

**\$695.00**

A-Line gown with Chiffon 3D appliqués over champagne tulle, ivory shimmer tulle, champagne matte lining, Chantilly lace skin unlined bodice, basque waist, buttons to end of train.

SIZE CHART B

## Donatella

0  02  04  06  08  10  12  14  16  18  20  22  24  26  28

DR2537



Ivory/Champagne/Skin

Ivory/Ivory/Skin

**\$795.00**

Ballgown with ivory lace over champagne tulle, Chantilly lace, champagne matte lining, unlined bodice, basque waist, illusion long sleeves, buttons to end of train.

SIZE CHART B

## Alejandra

0  02  04  06  08  10  12  14  16  18  20  22  24  26  28

DR2538



Ivory/Champagne/Skin

**\$695.00**

Fit-n-Flare Crepe gown with beaded lace and sequins over unlined skin-champagne cut-outs on bodice and back, slit, buttons to end of train.

SIZE CHART B

## Kimora

0  02  04  06  08  10  12  14  16  18  20  22  24  26  28

DR2539



- Ivory/Lavender/Skin
- Ivory/Skin

**\$785.00**

Fit-n-Flare gown with ivory lace over lavender tulle, 3D appliqués with sequins, Chantilly lace, lavender stretchy lining, skin unlined bodice, buttons to end of train.

SIZE CHART B

## Mitra

0  02  04  06  08  10  12  14  16  18  20  22  24  26  28

DR2540



- Ivory/Skin

**\$795.00**

Fit-n-Flare gown with ivory lace, sequins and 3D appliqués, skin cap sleeves, back and cleavage, buttons to end of waterfall train.

SIZE CHART B

## Orla

0  02  04  06  08  10  12  14  16  18  20  22  24  26  28

DR2541



- Ivory/Champagne/Almond/Mocha/Skin
- Ivory/Ivory

**\$695.00**

Fit-n-Flare gown with ivory beaded lace and sequins over glitter floral ivory tulle, mocha tulle, almond stretchy lining, champagne-skin unlined bodice, beaded straps, buttons to end of train.

SIZE CHART B

## Samira

0  02  04  06  08  10  12  14  16  18  20  22  24  26  28

DR2542



- Ivory/Champagne/Sand/Skin
- Ivory/Ivory/Skin

**\$795.00**

Fit-n-Flare gown with beaded ivory embroidered lace, Chantilly lace, sand stretchy lining, champagne-skin unlined bodice, beaded spaghetti straps, buttons to end of train.

SIZE CHART B

## Livia

0  02  04  06  08  10  12  14  16  18  20  22  24  26  28

DR2543



- Ivory/Champagne/Dust
- Ivory/Ivory

**\$775.00**

Ballgown with ivory beaded embroidery and sequins over ivory tulle, ivory shimmer tulle, champagne tulle, dust matte lining, unlined bodice, buttons to end of train.

SIZE CHART B

## Zinnia

0  02  04  06  08  10  12  14  16  18  20  22  24  26  28

DR2544



- Ivory/Champagne/Almond

**\$695.00**

Fit-n-Flare satin charmeuse gown with side train cut-outs with heavily sequin embroidered Chantilly lace over champagne tulle, ivory and almond stretchy lining, long sleeves, Chantilly lace bust detail, buttons to end of train.

SIZE CHART B

# top reordering carryovers

## Alanis

0  02  04  06  08  10  12  14  16  18  20  22  24  26  28

DR2430



- Ivory/Champagne/Nude/Skin  
 Ivory/Ivory/Skin

**\$745.00**

Fit-n-Flare gown with beaded ivory lace and sequins over champagne tulle, nude stretchy lining, Chantilly lace skin unlined bodice.  
 Matching veil: Joanna-VE/DR2412VE

SIZE CHART B

## Sierra

0  02  04  06  08  10  12  14  16  18  20  22  24  26  28

DR2409



- Ivory/Champagne/Skin

**\$795.00**

Ivory lace with sequins over ivory tulle unlined bodice, Crepe skirt, buttons to end of train, detachable swag sleeves.  
 Matching sleeves: Sierra-SL1/DR2409SL1  
 Matching veil: Sierra-VE/DR2409VE

SIZE CHART B

## Argentina

0  02  04  06  08  10  12  14  16  18  20  22  24  26  28

DR2302



- Ivory/Nude/Skin

**\$795.00**

Beaded ivory lace with sequins over nude stretchy lining bodice, ivory Crepe skirt, beaded straps, skin cleavage, fabric buttons to end of train.  
 Matching veil DR2302VE/Argentina-VE.

SIZE CHART B

## Joanna

0  02  04  06  08  10  12  14  16  18  20  22  24  26  28

DR2412



- Ivory/Champagne/Nude/Mocha/Skin  
 Ivory/Ivory/Skin

**\$785.00**

Beaded ivory lace with sequins, mocha tulle, nude stretchy lining, Chantilly lace unlined bodice, beaded straps.  
 Matching veil: Joanna-VE/DR2412VE

SIZE CHART B

## Shakira

0  02  04  06  08  10  12  14  16  18  20  22  24  26  28

DR2306



- Ivory/Champagne/Skin

**\$795.00**

Beaded ivory lace with sequins over skin tulle and champagne Chantilly lace unlined bodice, Crepe skirt with illusion train, beaded straps, fabric buttons to end of train.  
 Matching veil DR2306VE/Shakira-VE.

SIZE CHART B

## Uma

DR2441

0 02 04 06 08 10 12 14 16 18 20 22 24 26 28



- Ivory/Champagne/Dust/Skin  
 Ivory/Ivory/Skin

**\$795.00**

A-Line gown with ivory lace and sequins over ivory tulle, champagne tulle, dust matte lining, Chantilly lace skin unlined bodice, long sleeves.

Matching veil: Adora-VE/DR2301VE

SIZE CHART B

## Domenica

DR2432

0 02 04 06 08 10 12 14 16 18 20 22 24 26 28



- Ivory/Champagne/Skin

**\$795.00**

Mermaid gown with beaded ivory lace and sequins over Crepe, Chantilly lace champagne-skin unlined bodice, illusion train.

SIZE CHART B

## Sima

DR2339

0 02 04 06 08 10 12 14 16 18 20 22 24 26 28



- Ivory/Champagne/Buff/Skin  
 Ivory/Ivory/Skin

**\$795.00**

Ivory lace with sequins over ivory tulle, champagne tulle, buff stretchy lining, skin unlined bodice, beaded straps, buttons over zipper.

SIZE CHART B

## Adora

DR2301

0 02 04 06 08 10 12 14 16 18 20 22 24 26 28



- Ivory/Champagne/Dust/Skin  
 Ivory/Ivory/Skin

**\$795.00**

Ivory lace with sequins, champagne tulle, dust satin lining, unlined bodice, fabric buttons to end of train.

Matching veil DR2301VE/Adora-VE.

SIZE CHART B

## Aura

DR2202

0 02 04 06 08 10 12 14 16 18 20 22 24 26 28 30



- Ivory/Champagne/Skin

**\$795.00**

Beaded ivory lace with silver thread and sequins, champagne and skin illusion back, ivory lace with sequins over ivory tulle train, buttons to end of train.

SIZE CHART A

**DESCRIPTION REFERS TO SAMPLE COLOR**

TOTAL UNITS: \_\_\_\_\_

TOTAL AMOUNT: \_\_\_\_\_

**OBSERVATIONS/INSTRUCTIONS:**


---



---



---

DATE: \_\_\_\_\_

SIGNATURE: \_\_\_\_\_

**SUBJECT TO FINAL APPROVAL.**

In order to expedite your sample dresses, Eddy K reserves the right to substitute one size, up or down.

A DIVISION OF EDDY K  
 540 RUE BEAUHARNOIS OUEST, SUITE # 203, MONTREAL, QC, CANADA H2N1L2  
 TEL.: 1-877 6783235 / 514-2239345 FAX: 514-2239346  
 info@eddykcollections.com

Click your sales representative & send your order form.

**SENIOR OPERATIONS MANAGER:**

DAVE CARPENTER | Dave@eddykbridals.com | 516.567.0033

**NATIONAL SALES MANAGER | USA & CANADA:**

KATIE KILBRIDE | Katie@eddykbridals.com | 910.583.6837

**SALES TEAM:**

SCOTT ROSS | East Coast | Scott@eddykbridals.com | 810.240.5027

TAMMY BORS | Southeast & TX | Tammy@eddykbridals.com | 561.309.4064

BETH FREEBURG | West Coast | Beth@eddykbridals.com | 612.702.3466

ROBIN MEDINA | Central States | Robin@eddykbridals.com | 303.810.1661

KAITLIN HORVATH | Canada | kaitlin@eddykbridals.com | 848.219.3622