

purchase order

Curvy | EddyK

2026 COLLECTION

CUSTOMER: _____

CONTACT NAME: _____

ADDRESS: _____

TEL: _____

EMAIL: _____

SALES REP: _____

ALL PRICES ARE IN CAD

Annabelle

16W

18W

20W

22W

24W

26W

28W

30W

32W

UR621



Ivory

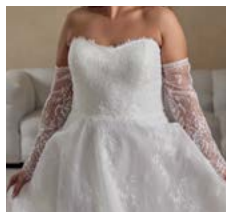
\$895.00

ivory chantilly lace ballgown with eyelash trim along soft scoop neckline, buttons to end of train

[CURVY SIZE CHART](#)

Annabelle-SL S M L

UR621SL



Ivory

\$99.00

chantilly lace long sleeves

[CURVY SIZE CHART](#)

Sunny

16W

18W

20W

22W

24W

26W

28W

30W

32W

UR622



Ivory

\$995.00

fit-n-flare crepe gown with off the shoulder connected swag straps, ivory lace and sequins, buttons to end of illusion train

[CURVY SIZE CHART](#)

Paige

16W

18W

20W

22W

24W

26W

28W

30W

32W

UR623B



Ivory

\$985.00

mermaid brocade gown with draped cat-eye strapless neckline, buttons to end of train

[CURVY SIZE CHART](#)

Paige

UR623M



16W 18W 20W 22W 24W 26W 28W 30W 32W

Ivory

\$795.00

mermaid mikado gown with draped cat-eye strapless neckline, buttons to end of train

[CURVY SIZE CHART](#)

Bonnie

UR624



16W 18W 20W 22W 24W 26W 28W 30W 32W

Ivory/Skin

\$855.00

a-line chiffon gown with ruched bodice, skin cleavage, slit, buttons to end of train

[CURVY SIZE CHART](#)

Bonnie-SL

UR624SL



S M L

Ivory

\$99.00

chiffon bell sleeves

[CURVY SIZE CHART](#)

Lilah

UR625



16W 18W 20W 22W 24W 26W 28W 30W 32W

Ivory/Champagne/Dust/Skin
 Ivory/Ivory/Skin

\$895.00

ballgown with beaded ivory lace and sequins over ivory tulle, champagne tulle, dust matte lining, skin cleavage, buttons to end of train

[CURVY SIZE CHART](#)

Dotty

UR626



16W 18W 20W 22W 24W 26W 28W 30W 32W

Ivory

\$895.00

ivory mikado a-line gown, ivory corset back, slit, pockets, buttons to end of train

[CURVY SIZE CHART](#)

Emery

UR627



16W 18W 20W 22W 24W 26W 28W 30W 32W

Ivory

\$775.00

ivory chiffon a-line with ivory lace over ivory tulle, illusion straps and ivory illusion closed back, buttons to end of train

[CURVY SIZE CHART](#)

Melody

UR628



- Ivory/Champagne/Dust/Skin
 Ivory/Ivory/Skin

\$965.00

ballgown with off the shoulder connected swag straps, beaded ivory lace and sequins over ivory tulle, champagne tulle, dust matte lining, skin cleavage, slit, buttons to end of train

[CURVY SIZE CHART](#)

[16W](#) [18W](#) [20W](#) [22W](#) [24W](#) [26W](#) [28W](#) [30W](#) [32W](#)

Jane

UR629



- Ivory

\$995.00

fit-n-flare crepe gown with beaded ivory lace, sequins and pearls, buttons to end of illusion train

[16W](#) [18W](#) [20W](#) [22W](#) [24W](#) [26W](#) [28W](#) [30W](#) [32W](#)

Brielle

UR630



- Ivory/Skin

\$995.00

fit-n-flare gown in ivory lace with sequins over ivory tulle, organza, ivory stretchy lining, buttons to end of train

[CURVY SIZE CHART](#)

[16W](#) [18W](#) [20W](#) [22W](#) [24W](#) [26W](#) [28W](#) [30W](#) [32W](#)

Elaine

UR631



- Ivory/Skin

\$795.00

mikado ballgown with basque waist, skin cleavage, pockets, buttons to end of train

[CURVY SIZE CHART](#)

[16W](#) [18W](#) [20W](#) [22W](#) [24W](#) [26W](#) [28W](#) [30W](#) [32W](#)

Shay

UR632



- Ivory

\$995.00

fit-n-flare gown with beaded ivory lace and sequins over ivory tulle, chantilly lace, ivory stretchy lining, beaded spaghetti straps, buttons to end of train

[CURVY SIZE CHART](#)

[16W](#) [18W](#) [20W](#) [22W](#) [24W](#) [26W](#) [28W](#) [30W](#) [32W](#)

Tinsley

UR633



- Ivory

\$895.00

crepe a-line gown with corset bodice and basque waist, slit, buttons to end of train

[16W](#) [18W](#) [20W](#) [22W](#) [24W](#) [26W](#) [28W](#) [30W](#) [32W](#)

Tinsley-SL S M L

UR633SL

 Ivory**\$99.00**

crepe-chiffon off shoulder bishop sleeves

[CURVY SIZE CHART](#)

Goldie 16W 18W 20W 22W 24W 26W 28W 30W 32W

UR634

 Ivory**\$995.00**

fit n flare gown with strapless sweetheart neckline in all over beaded embroidered tulle with sequins

[CURVY SIZE CHART](#)

Goldie-DT 16W 18W 20W 22W 24W 26W 28W 30W 32W

UR634DT

 Ivory**\$695.00**

removable mikado overdress with buttons to end of train

[CURVY SIZE CHART](#)

Halsey 16W 18W 20W 22W 24W 26W 28W 30W 32W

UR635

 Ivory**\$995.00**

ballgown with satin corset bodice with basque waist, pearl and crystal peek-a-boo beading, ivory tulle skirt, ivory matte lining, buttons to end of train

[CURVY SIZE CHART](#)

Waverly 16W 18W 20W 22W 24W 26W 28W 30W 32W

UR636

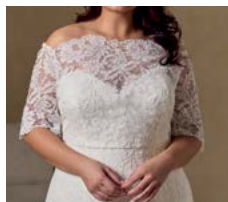
 Ivory/Sand**\$1,250.00**

mermaid gown with ivory corded lace over ivory tulle, sand stretchy lining, buttons to end of train

[CURVY SIZE CHART](#)

Waverly-JK 16W 18W 20W 22W 24W 26W 28W 30W 32W

UR636JK

 Ivory**\$199.00**

corded lace off shoulder 3/4 length sleeve jacket

[CURVY SIZE CHART](#)

top reordering carryover styles

Elsie

UR527



16W **18W** **20W** **22W** **24W** **26W** **28W** **30W** **32W**

Ivory

\$795.00

A-Line gown in ivory Crepe with ruched bodice, pockets, buttons to end of train.

[CURVY SIZE CHART](#)

Liz

UR471



16W **18W** **20W** **22W** **24W** **26W** **28W** **30W** **32W**

Ivory/Skin

\$995.00

Satin ballgown with beaded ivory lace and sequins, skin illusion back, buttons to end of train, pockets.

[CURVY SIZE CHART](#)

Bria

UR535



16W **18W** **20W** **22W** **24W** **26W** **28W** **30W** **32W**

Ivory/Champagne/Dust/Sand/Skin
 Ivory/Ivory/Skin

\$895.00

A-Line gown with beaded lace and sequins over ivory tulle, champagne tulle, dust matte lining, buttons to end of train.

[CURVY SIZE CHART](#)

Yvonne

UR467



16W **18W** **20W** **22W** **24W** **26W** **28W** **30W** **32W**

Ivory/Skin

\$1,095.00

Crepe fit-n-flare gown with ivory lace, sequins and 3D appliqués, skin illusion back and cap sleeves, buttons to end of illusion train.

[CURVY SIZE CHART](#)

Avril

UR526



16W **18W** **20W** **22W** **24W** **26W** **28W** **30W** **32W**

Ivory/Champagne/Skin

\$895.00

Fit-n-Flare gown with beaded ivory lace and sequins over ivory tulle, champagne-skin unlined back.

[CURVY SIZE CHART](#)

Angel

UR522

16W 18W 20W 22W 24W 26W 28W 30W 32W



- Ivory/Champagne/Dust/Skin
- Ivory/Ivory/Skin

\$895.00

A-Line gown with ivory lace and sequins over ivory tulle, champagne tulle, dust matte lining, ivory-skin long bishop sleeves, buttons to end of train.

[CURVY SIZE CHART](#)

Addison

UR473

16W 18W 20W 22W 24W 26W 28W 30W 32W



- Ivory/Skin

\$875.00

Ivory Crepe A-line gown with three incorporated beaded belts, skin cleavage, buttons to end of train, pockets.

[CURVY SIZE CHART](#)

Kenzie

UR468

16W 18W 20W 22W 24W 26W 28W 30W 32W



- Ivory

\$975.00

Satin ballgown with ivory lace on bodice, buttons to end of train, pockets.

[CURVY SIZE CHART](#)

DESCRIPTION REFERS TO SAMPLE COLOR**TOTAL UNITS:** _____ **TOTAL AMOUNT:** _____**OBSERVATIONS/INSTRUCTIONS:**

DATE:_____
SIGNATURE:**SUBJECT TO FINAL APPROVAL.**

In order to expedite your sample dresses, Eddy K reserves the right to substitute one size, up or down.

A DIVISION OF EDDY K

540 Rue de Beauharnois Ouest, suite #203, Montreal, QC, Canada H2N 1L2

TEL.: 1 877 678 3235 / 514 223 9345 FAX: 514 223 9346

info@eddykbridals.com

Contact your sales representative & send your order form.

SENIOR OPERATIONS MANAGER:

Dave Carpenter | Dave@eddykbridals.com | 516.567.0033 | Missouri

NATIONAL SALES MANAGER | USA & CANADA:

Katie Kilbride | Katie@eddykbridals.com | 910.583.6837 | Illinois, Indiana, Iowa, Kansas, Kentucky, Michigan, Minnesota, Nebraska, Ohio, Oklahoma, Rhode Island, South Dakota, Virginia, Wisconsin

SALES TEAM:

Robin Medina | Robin@eddykbridals.com | 303.810.1661 | Alabama, Colorado, Connecticut, Delaware, Maine, Maryland, Montana, Nevada, New Hampshire, New Jersey, New Mexico, North Carolina, Pennsylvania, Vermont, Wyoming**Tammy Bors** | Tammy@eddykbridals.com | 561.309.4064 | Arkansas, Florida, Georgia, Louisiana, Mississippi, South Carolina, Tennessee, Texas**Kaitlin Horvath** | kaitlin@eddykbridals.com | 848.219.3622 | New York, West Virginia, Arizona, California, Idaho, Massachusetts, North Dakota, Oregon, Utah, Washington + Canada